



7D
6N

本州 物語

HONSHU MONOGATARI

东京 | 山梨 | 京都 | 大阪

TOKYO | YAMANASHI | KYOTO | OSAKA

JPMGD07



1 吉隆坡 ✕ 羽田

集合于吉隆坡国际机场，搭乘飞往日本的航班。

📍 抵达羽田机场后，转运至机场酒店休息。

2 羽田 - 25公里 - 东京

📍 仲见世商店街

充满下町风情的街区，沿路商店售卖各种小吃与伴手礼，现烤仙贝店、浅草名物人形烧等等。

📍 浅草寺

东京最古老的寺庙，也是必游热门景点。这座寺庙的标志是正门悬挂着的巨大“雷门”大灯笼。

📍 秋叶原

被称为“电器城”，是东京著名的电子产品和动漫文化中心。这里是动漫迷、游戏爱好者和收藏者的天堂。

📍 新宿

一个可以品尝美食、购物的地方，更是娱乐的天堂，而其中的歌舞伎町则以其不夜城的美誉而闻名。

3 东京 - 151公里 - 山梨

📍 筑地场外市场

在这里不但可以品尝到各种传统美食外，也是众多食品和厨房设备的批发商及供应商的大本营，也是东京最佳餐馆的聚集地。

📍 合味道纪念馆

参观合味道纪念馆，了解如何制作一碗美味的拉面。

📍 横滨港未来21

一个结合历史与现代魅力的热门旅游目的地，拥有美丽的海滨风光以及众多购物、餐饮和娱乐设施。著名地标包括地塔和红砖仓库。

📍 山中湖温泉

我们将在最闻名且古老的温泉老区过夜。

4 山梨 - 190公里 - 静冈

📍 大石公园

夏季，您可以欣赏薰衣草的美丽，秋季则有艳红的扫帚草轻轻摇曳，宛如波动的海洋，并与红叶和富士山的美景遥相辉映。

季节限定

★富士山（4月01日 - 11月30日）

如果时间和天气允许，您可以登上富士山五合目。富士山海拔3,776米，是日本最高的山。

※ 视天气状况而定。

★富士山全景缆车（12月01日 - 3月31日）

从河口湖东岸上升400米，到达天庄山山顶附近的观景台。从海拔1,000多米的观景台上，可以欣赏到下方湖泊和富士山的全景。

★富士芝樱季（4月20日 - 5月02日）

春季时分，富士山下就会呈现壮观的“粉红地毯”一整片渐层的粉红和富士山的景色，美不胜收。

★品尝当季水果（5月03日 - 4月19日）

这里的水果不仅新鲜，而且富含丰富的营养。此外这里贴近大自然，是放松身心、享受宁静的好去处。

5 静冈 - 227公里 - 京都 - 53公里 - 大阪

📍 古典京都

穿梭“二年坂，三年坂”千年日式风情老街，有时候更可以遇见穿梭江户时代身穿和服的日本艺妓。

📍 清水寺

京都最古老的寺院，也是世界文化遗产。

📍 伏见稻荷神社

神社最著名的景观是“千本鸟居”，由成千上万座朱红色鸟居组成的长廊，通往稻荷山的顶端。

📍 新世界

以通天阁而闻名，您可以在这里品尝到大阪的美食，如串炸和煎饼等。

6 大阪 - 38公里 - 奈良 - 72公里 - 关西

📍 黑门市场

大阪著名的市场，以新鲜海鲜、美食和购物闻名。

📍 大阪城（拍照留念）

📍 心斋桥

大阪最繁华的商业街，最著名的百货商店街、流行时尚街、风味美食街，还有道顿堀都集中在这里。

📍 奈良公园

公园内散养着许多性格温顺的鹿，您可以购买饲料喂它们，或是轻轻抚摸它，尽情享受与其互动的乐趣。

📍 奈良东大寺

此佛教寺庙内供奉着世界上最大的青铜佛像，高约15米，也是世界文化遗产。

7 关西 ✕ 吉隆坡

今天，我们将乘搭当日班机返回家园。

※ 行程可能会以最终确定的航班而前后调动。



奈良公园 / Nara Park



秋叶原
Akihabara

1 KUALA LUMPUR ✕ HANEDA

Assemble at Kuala Lumpur International Airport for departure flight to Japan.

📍 **Transfer to hotel for rest upon arrival at Haneda airport.**

2 HANEDA – 25km – TOKYO

📍 **Nakamise Street**

A neighborhood full of Shitamachi-style, shops along the road sell a variety of snacks and souvenirs, such as freshly grilled senbei shops and Asakusa's famous Ningyoyaki and more.

📍 **Sensoji Temple**

Tokyo's oldest Buddhist temple and a must-visit landmark. The hallmark of this temple is the huge red lantern with Thunder Gate carved on it.

📍 **Akihabara**

Known as "Electric Town," Akihabara is a famous center for electronics and anime culture in Tokyo. It is a paradise for anime fans, gamers, and collectors.

📍 **Shinjuku**

A place where you can enjoy delicious food and shopping, and it's also a paradise for entertainment, with **Shinjuku Kabukicho** being particularly famous for its reputation as the ever-bright city.

3 TOKYO – 151km – YAMANASHI

📍 **Tsukiji Outer Market**

A must-visit for food lovers, where you can savor a variety of traditional Japanese cuisine. This bustling market is also a hub for wholesalers and suppliers of fresh goods and cooking equipment, attracting some of Tokyo's finest restaurants.

📍 **CupNoodles Museum Yokohama**

Discover the art of making a delicious bowl of ramen through interactive exhibits and hands-on activities.

📍 **Minato Mirai 21**

A popular tourist destination blending historical and modern charm, with beautiful waterfront views and many shopping, dining, and entertainment options. Notable landmarks include the Landmark Tower and the Red Brick Warehouse.

📍 **Yamanakako Onsen**

Overnight in the most famous and oldest onsen hot spring in Shizuoka Prefecture.

4 YAMANASHI – 190km – SHIZUOKA

📍 **Oishi Park**

In summer, you can admire the beauty of lavender, while in autumn, the vibrant red broom grass sways gently like ocean waves, perfectly complementing the stunning scenery of autumn leaves and Mount Fuji.

Seasonal Arrangement:

★ Mount Fuji (01 Apr - 30 Nov)

If weather permits, proceed to Mount Fuji 5th Station to enjoy the magnificent view of "UNKAI" in Japan's highest mountain.

※ Subject to weather conditions.

★ Mount Fuji Panoramic Ropeway (01 Dec - 31 Mar)

Enjoy a panoramic view of the lake below and the majestic Mount Fuji from above.

★ Fuji Shibazakura Festival (20 Apr- 02 May)

Enjoy splendid view of Shibazakura the "Pink Carpet" with Mount Fuji on the ground.

★ Fresh Fruits Tasting (03 May - 19 Apr)

The fruits here are not only fresh but also nutritious. Additionally, this place brings you close to nature, making it an ideal spot to relax and unwind.

5 SHIZUOKA – 227km – KYOTO – 53km – OSAKA

📍 **Classical Kyoto**

Walk along "Ninenzaka", "Sannenzaka" a typical Japanese souvenir street where you might spot Geisha walking around the street.

📍 **Kiyomizu-dera Temple** 🌸🌸

One of the most celebrated temples in Japan and is listed in the UNESCO World Heritage Site.

📍 **Fushimi Inari Shrine**

The most famous feature of the shrine is the "Thousand Torii", a corridor composed of thousands of vermilion Torii gates leading to the top of Inari Mountain.

📍 **Shinsekai**

Famous for **Tsutenkaku**, you can enjoy Osaka delicacies such as Kushikatsu and Doteyaki here.

6 OSAKA – 38km – NARA – 72km – KANSAI

📍 **Kuromon Market**

Osaka's famous market is known for its fresh seafood, delicious food, and shopping.

📍 **Osaka Castle (Photo Stop)**

📍 **Shinsaibashi**

Shop at Osaka's busiest and largest shopping area, department store, fashion street, local snacks and **Dotonbori** are all here.

📍 **Nara Park** 🌸🌸

There are many gentle deer roaming around in the park. You can buy feed to offer them, or gently stroke them and enjoy the fun of interacting with them.

📍 **Nara Todaiji Temple**

This Buddhist temple houses the world's largest bronze Buddha statue, which is about 15 meters high and is also a world cultural heritage.

7 KANSAI ✕ KUALA LUMPUR

Proceed to airport for your flight back home.

※ Sequence of the itinerary is subject to change according to the final flight confirmation.





行程亮点 HIGHLIGHT

- 温泉体验
- 仲见世街道
- 浅草寺
- 秋叶原
- 新宿
- 筑地场外市场
- 合味道纪念馆
- 横滨港未来21
- 大石公园

- 品尝当季水果
- 清水寺
- 伏见稻荷神社
- 新世界
- 黑门市场
- 大阪城
- 心斋桥
- 奈良公园
- 奈良东大寺

- Onsen Experience
- Nakamise Street
- Sensoji Temple
- Akihabara
- Shinjuku
- Tsukiji Outer Market
- CupNoodles Museum Yokohama
- Minato Mirai 21
- Kawaguchiko Oishi Park

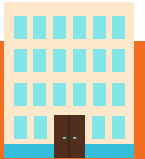
- Fresh fruit tasting
- Kiyomizu-dera Temple
- Fushimi Inari Shrine
- Shinsekai
- Kuromon Market
- Osaka Castle
- Shinsaibashi
- Nara Park
- Nara Todaiji Temple



美食 GOURMET

江户特色料理 / 日式烧烤吃到饱 / 日式拉面 / 酒店自助餐或套餐

Edo Style Cuisine / BBQ Buffet / Japanese Ramen / Hotel Buffet or set menu



酒店 HOTEL

			早餐 Breakfast	午餐 Lunch	晚餐 Dinner
D1	机场酒店 (1晚) Airport Hotel (1 Night)	羽田日航都市酒店或同等等级 Hotel JAL City Haneda Tokyo or similar	-	-	机上用餐 Meal on Board
D2	东京 (1晚) Tokyo (1 Night)	阪急第一酒店或同等等级 Ours Inn Hankyu or similar	酒店 Hotel	✓	✓
D3	山中湖温泉 (1晚) Yamanakako Onsen (1 Night)	富士美华酒店或同等等级 Fuji Mihana Resort or similar	酒店 Hotel	✓	✓
D4	滨松 (1晚) Hamamatsu (1 Night)	滨松协和酒店或同等等级 Hotel Concorde Hamamatsu or similar	酒店 Hotel	✓	✓
D5	大阪 (1晚) Osaka (1 Night)	The B新世界酒店或同等等级 Hotel The B Shinsekai or similar	酒店 Hotel	✓	✓
D6	机场酒店 (1晚) Airport Hotel (1 Night)	星际之门关西机场酒店或同等等级 Star Gate Hotel Kansai Airport or similar	酒店 Hotel	X	✓
D7	-	-	酒店 Hotel	机上用餐 Meal on Board	-



大阪城 / Osaka Castle



清水寺 / Kiyomizu-dera Temple



浅草寺 / Sensoji Temple

旅行必备:

护照或签证 – 团员有责任确保护照有效期需至少6个月(从返程日期算起), 并且取得必要的签证和准证。
旅游保险 – 出发前, 建议您购买全面的旅游保险。

条款:

1. 行程、膳食、酒店住宿、交通和自费项目可能会有所更改, 恕不另行通知。
2. 若出现无法预测的特殊情况特别是在旅游旺季期间, UVSB将保留更改或取消行程的权利。
3. 若UVSB的宣传手册或任何传播媒介, 出现任何形式的印刷失误或遗漏, 本公司一概不负责, 并且保留更正的权利。
4. 每位参与UVSB团的成员, 必须为自身安全或行为负责。若出现无法预测的特殊情况 (例如: 交通延误/取消、疾病、天气、示威、战争等等), 因而引发额外支出的问题, UVSB一概不负责, 旅客需自行承担额外的费用。
5. 详情条款, 请参阅单张网页或浏览 <https://ubingo.my/home/terms.php>
6. 以上图片仅供参考, 请以实物为准。

备注: UVSB为UbinGO Vacations Sdn Bhd.

日本团 – 附加条款:

1. 所有行程以中文讲解为主。若有需要, 将提供简单的英语翻译。
2. 如预订三人间, 提供的额外床垫为滚动式折叠床。
3. 团费仅适用于大马公民, 外国公民则需缴付额外费用。

Travel Essentials:

Passport & Visas – Each tour member is responsible to ensure their passport is valid for at least six (6) months from the return date of the trip and all necessary visas and permits have been acquired.
Travel Insurance – It's essential that you take out comprehensive travel insurance before travel.

Terms & Conditions:

1. Itineraries, meals, hotels, transportation and optional tour are subject to change without prior notice
2. UVSB reserves the right to make changes to or cancel the itinerary at any time due to unforeseen circumstances, especially during peak periods or in the event of a force majeure.
3. UVSB is not responsible for omissions, printing and/or presentation errors in brochures or in any media where such information may be presented; UVSB reserves the right to make corrections as required.
4. Every person participating in UVSB's tours shall travel at his/her own risk. UVSB shall not be held liable to any person for additional expenses that may be incurred due to delays or changes in any transport services, sickness, weather, strikes, war or other causes.
5. For other terms & conditions, refer overleaf of invoice or visit <https://ubingo.my/home/terms.php>
6. All pictures shown are for illustration purpose only.

Note: UVSB refers to UbinGO Vacations Sdn Bhd.

Japan Tours – Additional Terms & Conditions:

1. Tours are conducted in Mandarin, with simple translation in English if required.
2. For booking triple-share rooms please note that additional bed is based on "roll-away" bed.
3. Tour fare quoted is for MALAYSIAN, the non-Malaysian surcharge applied.

Tentative Flight Details - Subject to Change

For Agent Use Only:

Updated Date: **NOV 2024**